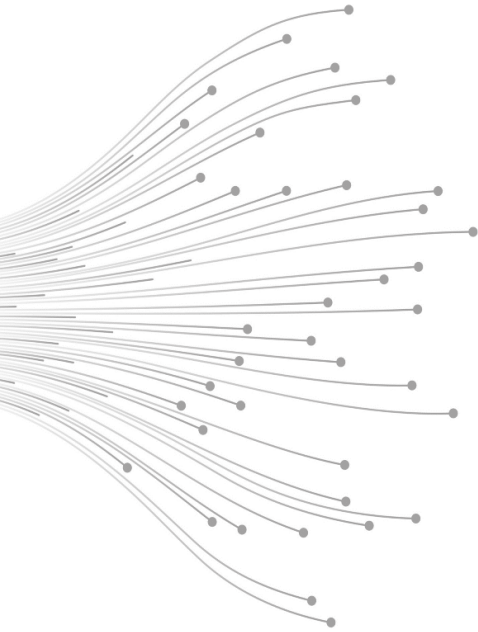


# ARTIFICIAL HORIZON

Advanced End-to-End UAS Solutions



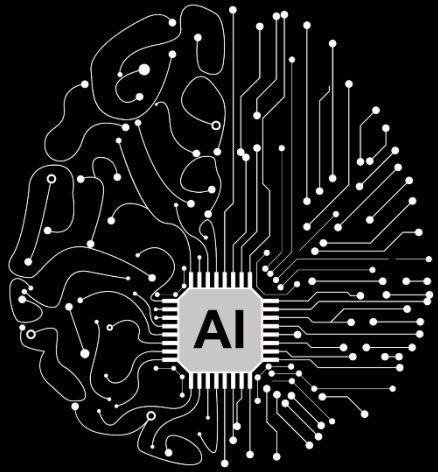
Discover the Talisman line of Unmanned Aerial Systems from Artificial Horizon. An innovative line of multirole airborne UAS which offer the highest payload-to-size ratio in their class. Fully autonomous and easily accessible for any fast reconfiguration, and provide unprecedented stall-proof and spin-proof capabilities thanks to the unique design and advanced control systems.



- Length: 270 cm.
- Wingspan: 320 to 340 cm.
- Maximum Take Off Weight: up to 80 kg.
- Useful Load: up to 33 kg.
- Fully autonomous.
- Max Level Speed: up to 230 km/h.
- Ceiling: 10,000 to 31,000 ft.
- Flight Endurance: up to 18 hours.
- Range: > 1,000 km.

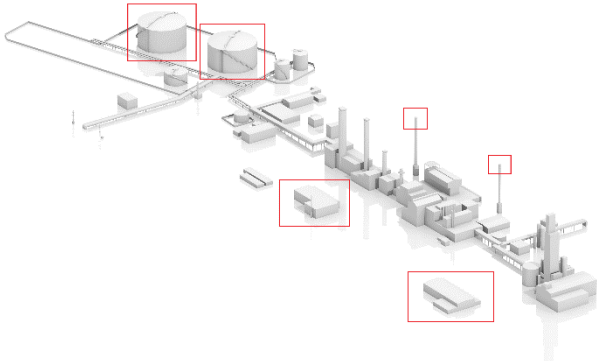


Our state-of-the-art multipurpose Airborne Artificial Intelligence (AI) compliments the advanced payload systems integrated with the Talisman UAS to provide fully integrated end-to-end solutions from software to hardware that can be used for various applications with superior accuracy and results.



The Talisman UAS is integrated with the gyro stabilised gimbal TEMIS XL16 which provides the unique combination of up to 4 sensors with full HD x30 optical zoom daylight sensor, one IR sensor with 60mm lens, long range LRF and optional laser pointer.

We integrate our UAS with satcom technologies to provide Beyond Visual Line of Sight (BVLOS) operations ensuring long range and fully autonomous missions.



At Artificial Horizon, we provide unrivalled aerial capabilities for civil, security, and defence applications such as aerial mapping, inspection, detection, recognition, tracking, surveillance, reconnaissance, and much more using the advanced payload systems and our multipurpose state-of-the-art Airborne AI solutions that are integrated with the Talisman UAS.



Discover the cutting-edge wide field of view Voyager LiDAR delivering 1.5 million points per second and no loss of points. Integrated with the Talisman UAS and the LiveStation, it is now possible to generate high-quality 3D topographic images for various applications in real-time.

